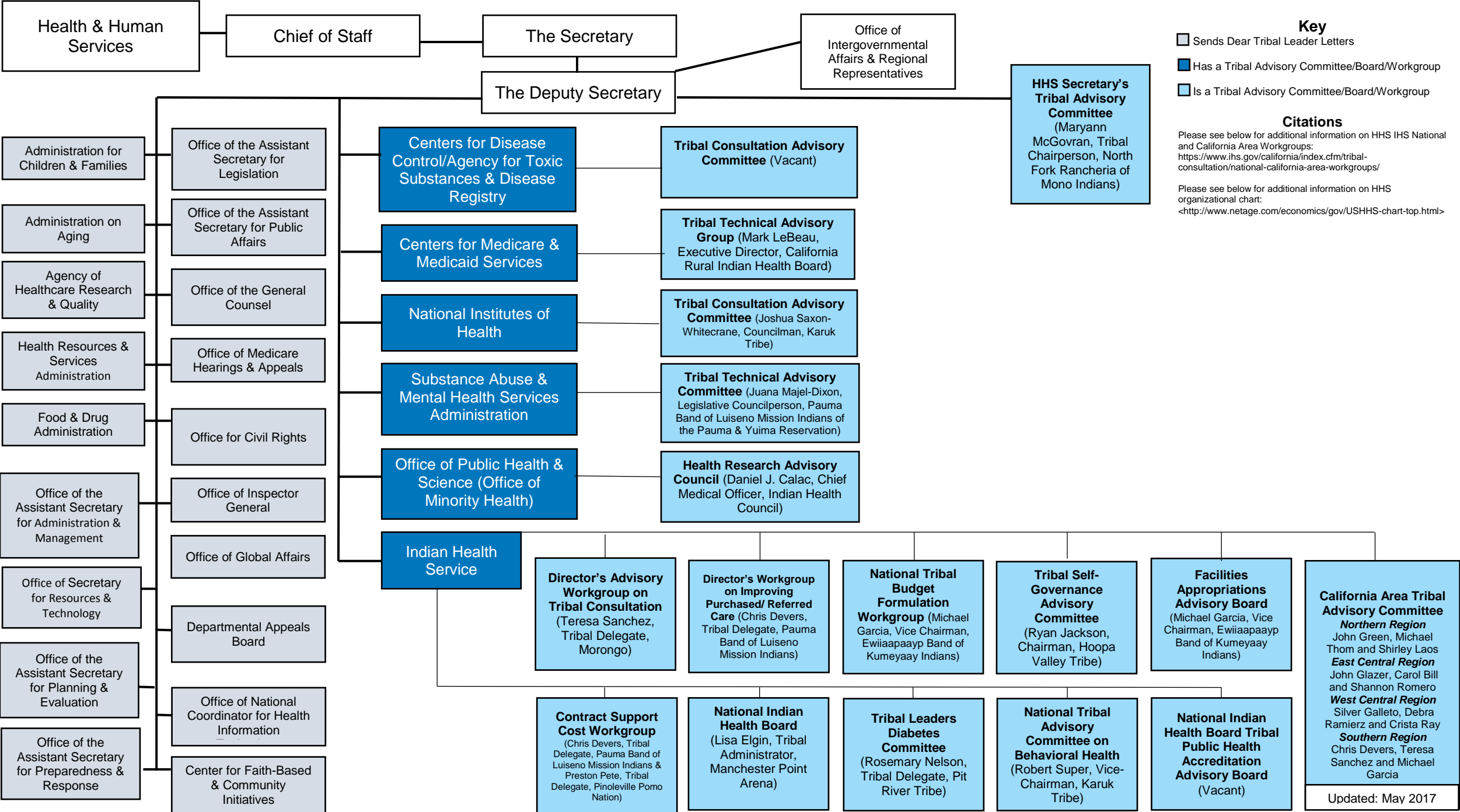


Health and Human Services 2017 Tribal Advisory Committees/Boards/Workgroups and California Primary Delegates



Narrative for Health and Human Services 2017 Tribal Advisory Committees/Board/Workgroups and California Primary Delegates Flow Chart

How does the federal government seek Tribal Consultation?

The Department of Health and Human Services (HHS) implemented the Tribal Consultation policy in order “to establish clear policies and to further the government–to-government relations between the federal government and Indian Tribes.”¹ The policy requires HHS to consult with Tribes before any action is taken that will significantly affect tribes. Each division within HHS has specific procedures to consult tribes in meaningful and timely ways. Some divisions of HHS have Tribal Advisory Committees/Boards/Workgroups (TACs), and other divisions send ‘Dear Tribal Leader Letters’ (DTLLs) to seek tribal input.

How do decisions made in a Tribal Advisory Committee/Board/Workgroups reach entities outside of the group?

Typically during a TAC meeting, various tribal representatives from the 12 Indian Health Service (IHS) Areas and the HHS agency tribal liaison are present. Additional experts and technical advisors may also be present depending on the group. For the 11 TACs within IHS, the IHS Director appoints staff to attend the meeting. For these 11 TACs, the appointed IHS staff person shares TAC internal decisions and recommendations with the IHS Chief of Staff, who then decides what information to share with HHS. In comparison, for the 5 TACs within other HHS divisions (e.g., Centers for Disease Control and Prevention, National Institutes of Health), senior HHS leadership typically are present at the TAC meetings. Therefore, Tribal representatives often share input and testimony directly with HHS representatives, tribal liaisons, and/or other HHS leaders. HHS representatives present at these 5 TAC meetings report information and recommendations from the TAC to HHS.

What is the purpose of the flow chart and how can it be used?

The purpose of this flow chart is to demonstrate how internal TAC decisions reach key senior leadership within HHS. Divisions listed in the first two columns in the flow chart send DTLLs to HHS. Divisions listed in the third column have a TAC. The remaining flow chart boxes depict the 11 TACs and 2017 California primary delegates. Please note, the HHS Secretary Tribal Advisory Committee has a direct line to the Deputy Secretary of HHS, which is why this TAC is not depicted under a specific HHS agency.

¹ Please see below for additional information about the U.S. Department of Health and Human Services Tribal Consultation Policy. <http://www.hhs.gov/sites/default/files/iea/tribal/tribalconsultation/hhs-consultation-policy.pdf>