

WHAT IS EPIDEMIOLOGY?

Gather

We gather health information about disease and wellness within our communities.

Understand

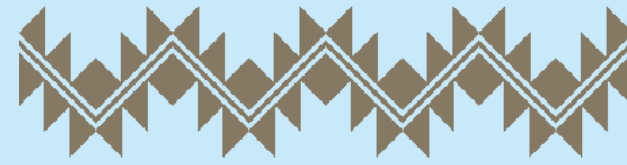
We use health information to understand what leads to health problems.

Act

Based on the understanding gained, together we can act to prevent disease and improve wellness.



California Tribal Epidemiology Center
California Rural Indian Health Board
4400 Auburn Blvd, 2nd Floor
Sacramento CA 95841
Phone: 916 929 9761
Fax: 916 929 7246
epicenter@crihb.net



IMPROVING AMERICAN INDIAN HEALTH IN CALIFORNIA



OUR MISSION

Indian people have been conducting health studies for thousands of years. Investigating and finding ways to heal is an inherent part of Indian culture. CTEC is built on those very same foundations and our mission is to improve American Indian health in California to the highest level. We carry this out by engaging American Indian communities in collecting and interpreting health information to establish health priorities, monitor health status, and develop effective public health services that respect cultural values and traditions of the communities.

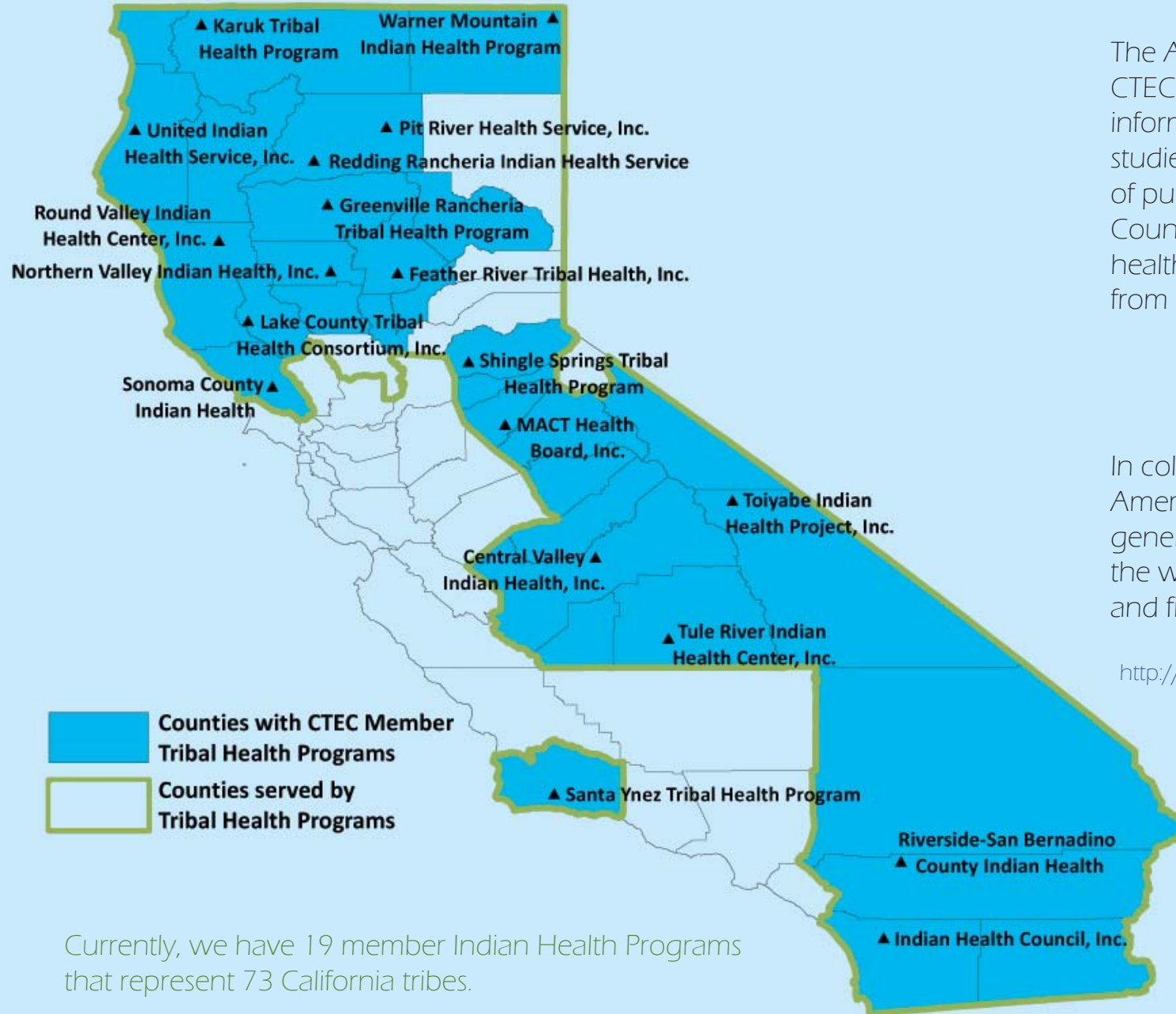


WHAT DO WE DO?

-  Rely on the guidance of tribal representatives to direct our priorities and efforts.
-  Track the changes of health issues of tribes and American Indian communities.
-  Provide tools to empower tribes and American Indian communities to improve their health.
-  Provide health related facts and figures to tribes and American Indian communities to strengthen community grant applications and inform local policy decisions.
-  Provide information to tribes to help them with emergency preparedness.



AREA SERVED BY MEMBER PROGRAMS



Currently, we have 19 member Indian Health Programs that represent 73 California tribes.

OUR ADVISORY COUNCIL

The Advisory Council counsels CTEC in the use of gathered health information, what epidemiologic studies to undertake, and the review of publications to be released. The Council includes both community and health professional representatives from member Indian Health Programs.

OUR WEBSITE

In collaboration with tribes and American Indian communities CTEC generates health information. Go to the website to see reports, fact sheets and find other tools.

<http://crihb.org/home/california-epi-center.html>

