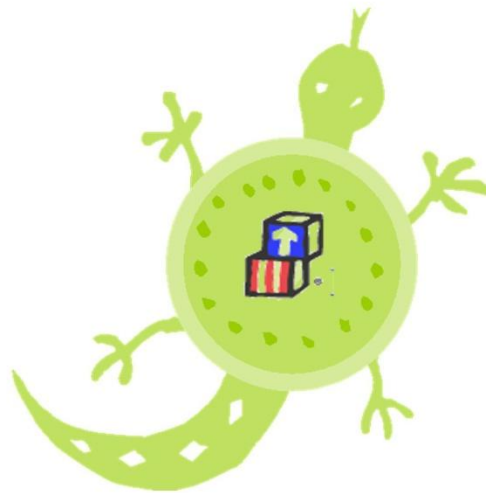


CALIFORNIA RURAL INDIAN HEALTH BOARD, INC.

ANNUAL PUBLIC REPORT

TRIBAL HEAD START PROGRAM PROGRAM YEAR 2010

(September 1, 2010 thru August 31, 2011)



4400 AUBURN BOULEVARD, 2ND FLOOR
SACRAMENTO, CA 95841
(916)929-9761
WWW.CRIHB.ORG

Introduction

This report has been prepared in order to comply with the Head Start Reauthorization Act of 2007. The Act states that:

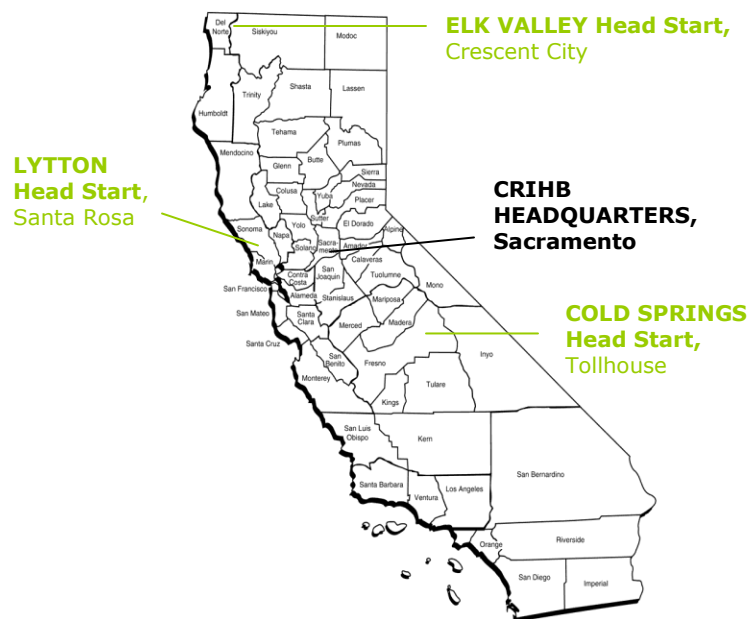
“Each Head Start agency shall make available to the public a report published at least once in each fiscal year that discloses the following information from the recently concluded fiscal year, except that reporting such information shall not reveal personally identifiable information about an individual child or parent:

- (A) The total amount of public and private funds received and the amount from each source.
- (B) An explanation of budgetary expenditures and proposed budget for the fiscal year.
- (C) The total number of children and families served, the average monthly enrollment (as a percentage of funded enrollment), and the percentage of eligible children served.
- (D) The results of the most recent review by the Secretary and the financial audit.
- (E) The percentage of enrolled children that received medical and dental exams.
- (F) Information about parent involvement activities.
- (G) The agency’s efforts to prepare children for kindergarten.
- (H) Any other information required by the Secretary.”

Program Description

In PY2010 (September 1, 2010 thru August 31, 2011), the California Rural Indian Health Board, Inc. provided its 17th year of Tribal Head Start services. Head Start is a national, federally-funded program that provides comprehensive preschool and family services. Head Start has an overall goal of helping children to prepare for kindergarten and to reach their full potential in school and later in life.

For PY2010, CRIHB Tribal Head Start was awarded 90 enrollment slots on behalf of three tribes in three separate counties in California: Lytton Rancheria in Sonoma County (20 children); Cold Springs Rancheria in Fresno County (20 children), and; Elk Valley Rancheria in Del Norte County (50 children).



Public and Private Funds Received PY2010

Funding	Federal	Local	Total
Office of Head Start	\$961,909*	\$0	\$961,909
In-Kind	\$0	\$249,965	\$249,965
Total	\$961,909	\$264,965	\$1,121,874

*Includes ARRA Funds

**Budgetary Expenditures
PY2010**

Category	Proposed Regular Budget (PA22)	Proposed T/TA Budget (PA20)	Actual Regular Budget (PA22)	Actual T/TA Budget (PA20)
Personnel	\$605,028.00	\$13,783.00	\$605,177.14	\$0.00
Fringe	\$261,570.00	\$0.00	\$265,353.57	\$0.00
Travel	\$2,000.00	\$0.00	\$0.00	\$0.00
Supplies	\$10,150.00	\$0.00	\$13,009.80	\$0.00
Contractual	\$0.00	\$0.00	\$0.00	\$1,250.00
Other	\$69,378.00	\$0.00	\$64,585.49	\$12,533.00
Total In-Kind	\$240,477.00	\$0.00	\$249,964.55	\$0.00
Total Head Start Budget	\$1,188,603.00	\$13,783.00	\$0.00	\$0.00
	Total Proposed=	\$1,202,386.00	Total Actual Federal=	\$961,909.00
			Total Actual (Fed&Non-Fed)=	\$1,211,873.55

Proposed Budget PY2011

Category	Proposed Federal (Reg-PA22)	Proposed Federal (T/TA-PA20)	Proposed In-Kind	Proposed Total
Personnel	\$596,631.00	\$0.00	\$39,430.00	\$636,061.00
Fringe Benefits	\$267,320.00	\$0.00	\$11,041.00	\$278,361.00
Travel	\$0.00	\$1,400.00	\$0.00	\$1,400.00
Equipment	\$0.00	\$0.00	\$0.00	\$0.00
Supplies	\$10,910.00	\$0.00	\$17,000.00	\$27,910.00
Contractual	\$0.00	\$4,000.00	\$58,914.00	\$62,914.00
Construction	\$0.00	\$0.00	\$0.00	\$0.00
Other	\$73,265.00	\$8,383.00	\$114,092.00	\$195,740.00
Total Head Start Budget	\$948,126.00	\$13,783.00	\$240,477.00	\$1,202,386.00

Services to Families

The Office of Head Start, American Indian/Alaska Natives Branch, funded CRIHB to serve 90 children for Program Year 2010. The total number of children served during the program year was 104, to include children who dropped from the program and those who

enrolled during the year. The program served only 31% over-income families; *tribal grantees are permitted to serve up to 49% over-income.*

Monthly enrollment was 100% for the months of September 2010 to May 2011. In other words, CRIHB was able to maintain its funded enrollment even as vacancies occur, through waiting lists. June 2011 enrollment was 20 out of 90, operating Cold Springs only, since Elk Valley (50 children) and Lytton (20 children) centers completed the required 128 days by the end of May. Average monthly attendance program-wide was 85.29%.

External Reviews

The most recent federal review of the CRIHB Tribal Head Start program occurred during the week of February 22, 2010. A follow-up report revealed one deficiency and eight areas of noncompliance (“findings”). After a follow-up review during the week of February 28, 2011, it was determined that two areas of non-compliance were “withdrawn” and all remaining areas of non-compliance had been corrected and the review was “closed” (ref: “Overview of Findings” letter dated 7/29/2011). CRIHB is subject to triennial federal monitoring during the 2012-2013 school year.

Auditors for the most recent independent audit (dated June 30, 2011) issued an “unqualified” report and determined CRIHB to be a “low-risk auditee”.

Selected Service Implementation Measures

During PY2009, 61% of all children enrolled were determined to be up-to-date on a well-child schedule according to the EPSDT. The low number of children up-to-date on a well-child schedule can generally be attributed to children who dropped from the program prior to an exam, physical exams with missing information, and the inability to obtain proof of exam and/or related lab results, etc. Any child who is not up-to-date on a well-child schedule has adequate documentation on file (Extended Follow-Up and Treatment Plan) to show continuous efforts toward bringing the child up-to-date and/or toward acquiring necessary documents reflecting the child is up-to-date.

Ninety-five percent (95%) of all children received a professional dental exam. Fifty-three percent (53%) of children who received a dental examination were diagnosed as needing treatment. Of those who required follow-up treatment, nearly 80% received treatment. The primary reason that children did not receive necessary treatment during the year can be attributed to “appointment scheduled for future date”.

Four children enrolled in the program received outside mental health services following referral. Sixteen-percent (16%) of the total enrollment included children with diagnosed disabilities who received services through the Local Educational Agency (LEA).

The following chart represents the number of families (out of 99 total enrolled families) who received the indicated family services during PY2010:

Emergency/Crisis intervention such as meeting immediate needs for food, clothing, or shelter	19
Housing Assistance such as subsidies, utilities, repairs, etc.	11
Mental Health Services	7
Job Training	8
Substance Abuse Prevention and Treatment	3
Domestic Violence Services	2
Adult education such as GED programs and college selection	15
Health Education	21
Parenting Education	38
Marriage Education	2

Forty-seven (47) families participated in the WIC program. Three (3) families reported they were homeless during the year and all three families acquired housing while in the Head Start program.

Parent Activities

Head Start is a program that places an emphasis on parent involvement, ensuring that parents play a significant role in the design, administration and daily operations of the program. In addition, activities are geared toward strengthening parents and families; parents are encouraged to take advantage of such opportunities. Consequently, parent involvement is accomplished through:

- Leadership activities, like Policy Council;
- Center Committee Meetings, held monthly;
- Home Visits and Parent Conferences;
- Parent-Planned Activities on Weekly Lesson Plan;
- Volunteerism, in the classroom and on field trips;
- Family Partnership Goal-Setting and Follow-Up Activities
- Child Goal-Setting and Individualized Planning;

Forty fathers (or male figures) participated in at least one male involvement activity. An example of such activities includes gardening projects, salmon release activities (Elk Valley), and a successful Bowling with Dads event (Cold Springs).

Kindergarten Preparation

The California Rural Indian Health Board, Inc. Tribal Head Start Program fosters kindergarten preparation and school readiness for all children enrolled.

The program utilizes The Creative Curriculum for Preschool, 4th Edition as a basis for the curriculum and planning. Following the Creative Curriculum, our teachers ensure a content-rich, developmentally appropriate program that supports active learning and promotes children’s progress in four developmental areas: 1) social-emotional; 2) physical; 3) cognitive; 4) language.

Using the Creative Curriculum Developmental Continuum Assessment, teachers assess children three times a year (Fall, Winter, Spring) on fifty indicators which represent “goals” for children in the program. One example of an indicator is “Understands the purpose of writing”. Teachers observe children throughout the year to discover where they fall on the continuum (e.g. Forerunner, Step 1, Step 2, or Step 3) for each indicator. Teachers and parents work as a team to set individual goals for children to help move them along the continuum toward kindergarten readiness.

For 2011-2012, the program has replaced the Creative Curriculum Developmental Continuum with the Desired Results Developmental Profile for Preschool (DRDP PS-2010). This assessment tool was developed and provided by the California Department of Education. The program will modify the process and tool (minimally) but within the requirements for child assessment as indicated by the Head Start Act. CRIHB Tribal Head Start will continue to utilize the Creative Curriculum for Preschool, 4th Edition as a basis for the curriculum and planning.

Fifty-three (53) Head Start children started kindergarten for the 2011-2012 school year.